



LIGHTING FOR **IMPACT**

LED Cooler Lights

Looking for a cooler lighting solution that will easily reduce energy costs and improve the look for merchandising? If so, Lighting for Impact has a bright idea for you. With LFI's Cooler LED Lighting, results are simply a matter of changing a light bulb.

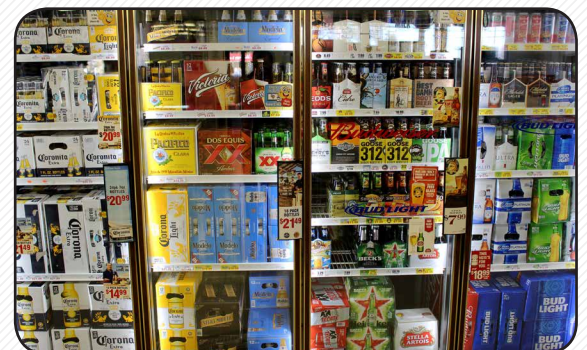
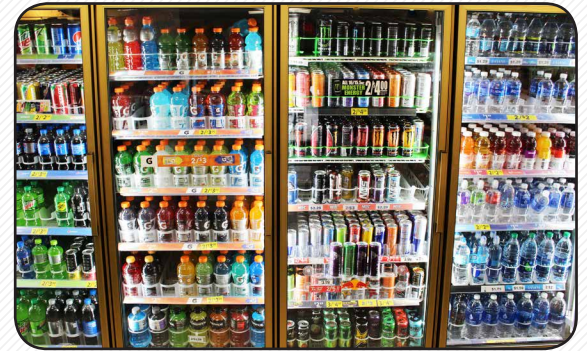
Not only will you be saving up to 85% of energy costs compared to your former fluorescent tube ballast combinations, but your cooler section will be revamped with sharp, head turning, LED lighting.

There is also no need to hire an electrician for installation. This ground breaking solution is designed so installation can be done by you and your staff in a matter of minutes. Switch today and experience the impact.

Unparalleled LED

Key Features

- Compatible with existing ballasts; replaces fluorescent lamps directly.
- IP65 Waterproof with excellent heat dissipation technology.
- Double-sided lighting that projects directly at intended product.
- More than 50,000 hour lifespan; compared to 7500 with the average fluorescent.



Turn off power.

Unplug and remove fluorescent.

1.



2.



Simple Self-Install

3.



Plug in LED Cooler Light.

4.



Turn on power.

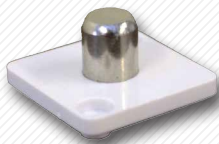


Retrofit Cooler LED Lighting Compatibility Checklist

□ Connection Compatibility

Take out one of your fluorescent tubes and examine the connector on either end. If they match with the ones below, move on to the next step.

Single Pin



High Output



□ Bulb Length

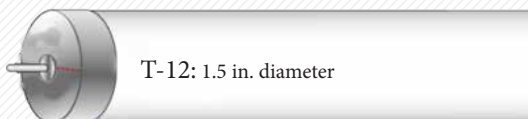
When you have an existing fluorescent tube out, check the length. Note that standard bulb lengths will be 2-3 inches shorter than approximate foot lengths to fit standard fixture.

5 ft.

6 ft.

□ Bulb Size

Along with checking for the length of the bulb, measure the diameter of the bulb in question. This will give you the bulb type.



□ Ballast Support

Don't know your ballast type? No problem! Lighting for Impact's LED Cooler Lights support all existing ballast types. Simply plug and play!

Direct-Wire

Existing Ballast

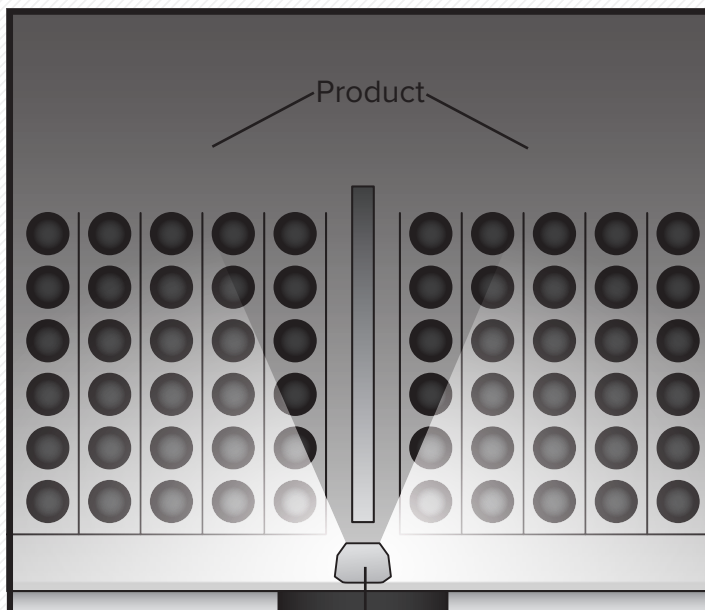
* In the event that the LED tube does not work with your ballast or if the ballast should ever fail or begin to hum in the future it can then be wired direct to line voltage, bypassing the ballast.*

Make the Switch

Nelson's Superior Products (888) 558-5575

Specifications

Light Distribution Diagram:
(top down view of cooler showing
light directed at product)



Performance Summary		
Models	5 ft.	6 ft.
Wattage	22.5 W	22.5 W
Lumen Output	2600 LM	2700 LM
Input Voltage	AC100-277V	
Efficacy	115 lm/W	120 lm/W
Working Current	360-380 mA	
CCT	5000K	
CRI	≥80	
Diode Type	SMD2835	
Power/Chip	0.5 W	
PF	≥0.9	
IP Rating	IP64	
Working Temperature	-4°F to 112°F	
Life Time Ta=77°F	50,000 H	
Replaces	T-12 - FA8 & R17D Fluorscent Lamps	

Make the Switch

Nelson's Superior Products (888) 558-5575